



21 Oxford Crescent Bridgeman Downs, QLD

4

2

4

Family home opposite reserve

This beautifully kept family home is located in a highly desirable pocket of Bridgeman Downs. Set on a large 778sqm block, it is in true walking distance to acres of bush land, kid friendly parkland, off leash dog park & walking trails. With its functional layout, spacious living areas & amazing entertainers deck, this amazing home is sure to suit families of all shapes & sizes.

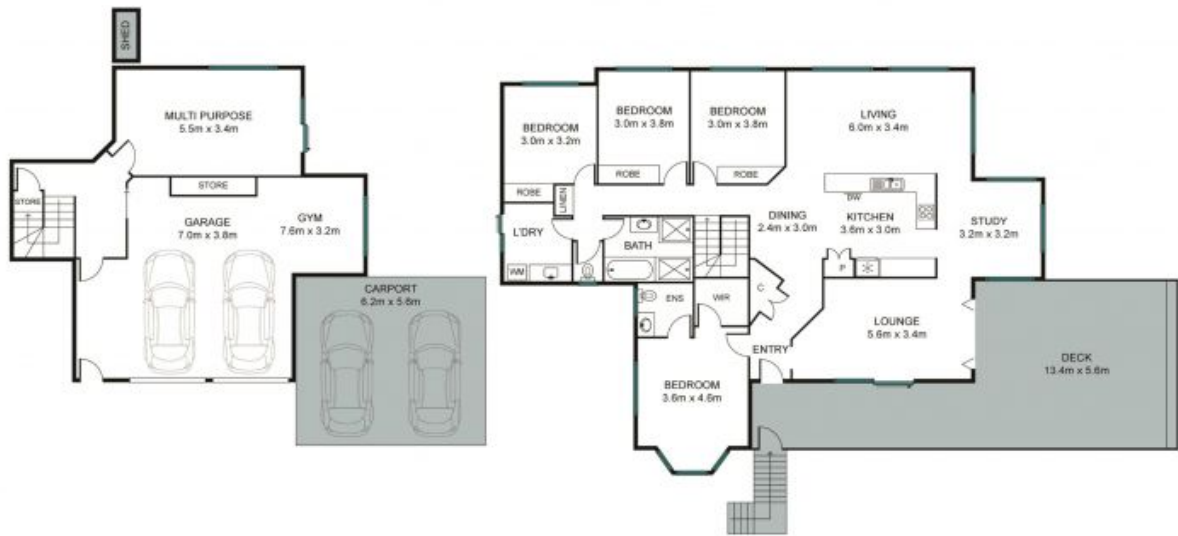
- Amazing elevated corner block
- Massive entertainers deck overlooking the reserve
- Open living with an abundance of natural light
- Great outdoor entertaining with incredible views
- Ducted air-conditioning ? 6 zones
- Solar power 1.5kw
- Potential 5th bedroom
- McDowall School Catchment

This home offers:

Price: For Sale Now
Council Rates: \$424.35 p/q

John Bradley
 0410 454 718

Matthew Biggs
 0499 498 988



Level 1

Level 2

The site plan and floorplan are not to scale, measurements are indicative and in metres. Bushes and trees are placed for illustration purposes. Plans should not be relied on. Interested parties should make and rely on their own enquiries.

21 Oxford Crescent, Bridgeman Downs

Stoneaspley.com.au

